



# Annual Report

Celebrating 140 Years of Library Service

Wicomico Public  
Library

Fiscal Year 2009  
July 1, 2009



**Wicomico Public Library and bookmobile during the 1950s.**



**Wicomico Public Library's newest branch, in Pittsville.**

## Inside

Message from the Director	2
Highlights	3
Revenues & Expenditures	3
Usage Statistics	4
Donors	5
Volunteers	5 & 6
Board of Trustees	6
Locations	6





This year the Wicomico Public Library celebrated 140 years of library service to Wicomico County.

From our origins as a subscription library established only seven years after the founding of the County itself, to our transformation into a free library in 1926, to our vibrant and bustling present, the Library has been an integral part of the Wicomico County community and its history.

The story of the Library has been the story of growth and increasing activity necessitating a series of increasingly larger buildings, allowing the Library to expand its services to meet the evolving needs of a growing community.

This past year the Library worked with Grimm & Parker Architects to complete the Main Library building feasibility study, which concluded that the one time World War I era National Guard Armory building was undersized, obsolete and not a good candidate for further renovation and expansion. The study recommended building a new 21<sup>st</sup> Century Main Library building.

As the fiscal year came to an end the Library was conducting a site evaluation study to determine the best location for a new Main Library building, and was in conversation with the City of Salisbury regarding several potential downtown sites. In addition to planning and advocacy for a new Main Library in Salisbury, the Library continues to expand its services to all of Wicomico County.

On June 30, 2009, the Library dedicated the new Pittsville Branch Library, located next to Pittsville Elementary & Middle School on Old Ocean City Road. This replacement structure provides nearly twice as much space, is far more visible to the public, and is a more functional and attractive building.

The new branch provides needed space for materials, a reading area, display space for children's books and a separate meeting area for events and programs.

The move (from the old construction trailer behind the school) represents the growth of a valuable partnership among the Library, the Board of Education, the Town of Pittsville, and Wicomico County to bring library service to the Pittsville area. Since the branch opened in January 2006, nearly 10,000 books have been checked out, 1,879 people have participated in various events, 118 adults have taken free computer classes, and the computers have been used 13,000 times.

Our usage numbers are up at all locations, typical in a down economy, but also a result of the quality and variety of our programs, collections and services.

Even more important than the usage numbers, we've seen an increase in volunteers and donors, valuable community partners in the Library's continuing success.

Most important of all, we see evidence of how the Library transforms lives in this community for the better, one life and one day at a time.

On behalf of the Library Board and staff of the Wicomico Public Library I want to thank all of you who have used and supported your Library over the past year. I invite you to be part of our exciting and challenging future.

Tom Hehman,  
Director



County Executive Rick Pollitt speaks at the grand re-opening.

**It is the mission of Wicomico Public Library to serve the people of Wicomico County by supporting education, enriching lives, and building community.**



## Highlights

### Building Fund Created

Wicomico Public Library created the Iris Rose Duncan Memorial Building Fund, which will be used along with other donations to help create a new Main Library. Mrs. Duncan was a long time user of the Library, and her generous bequest totaled near \$25,000. "The citizens of Wicomico County need a 21<sup>st</sup> Century library, in order to benefit from the unique combination of support for lifelong learning, community development and enrichment that a modern public library provides," says Jim Biggs, Library Board Chair. "With a great emphasis on cost benefit analysis, we'll have the best Library possible, based on functionality. Given the modest projected growth of the Library's branch system, this will be the Library's primary facility for the foreseeable future." Site selection is currently underway as the next part of the process.

### Friday Night Live

Thanks to a grant by the Salisbury Wicomico Arts Council and the generous sponsorship of the Peter and Judy Jackson Music Performance Fund, the Friday Night Live music series continued into 2009. This spring we had three very different concerts featuring local and regional artists with something for everyone. Isabel Umanzor led off the spring season with Chilean guitar, singing and percussion; then we had the Brian Perez Quartet with a mix of contemporary and classic jazz favorites; and Salisbury Brasswerkes & Friends rounded out the season featuring Lee Knier.

### Storytime: Better than Disney World

This winter our Children's Department received a postcard in the mail with Mickey on it and this is what it said: "Believe it or not - Entering Magic Kingdom Phebe was concerned she was going to miss story time. We assured her she would go to story time when we got home. Luckily, she enjoyed story time with Belle to hold her over until she gets home. It was great, but Belle is no Rosie!



Ted Merrill presents a donation to the Iris Rose Duncan Memorial Building Fund.

farm, I was somewhat isolated until high school. Books became my "window to the world." Today it is amazing how many services libraries provide. The grand reopening was held on my birthday, June 30 – an excellent opportunity to celebrate two special events of the day. If you live in the area and have not been, go – you'll like it.

*Thanks for making the library a place Phebe loves!"*

### Pittsville Branch

After our Pittsville Branch moved to a larger and more visible location, this letter appeared in the newspaper:

*As our county celebrates 140 years of library service, it is only fitting to offer huge congratulations to the grand reopening of the Pittsville Branch of the Wicomico Public Library. It is a pretty building, white with blue shutters and a wooden ramp leading up to the front doors.*

*It stands in front of the Pittsville Elementary and Middle School. The previously used building was located behind the school. It was dark and crowded inside, one long room with little light and bars on the small windows. Regardless, the staff there did amazing things to make it as pleasant and serviceable as possible. When it opened three years ago, it gave those of us who live in the area access to library services without making the trip to downtown Salisbury.*

*This new building is a pleasure to enter, with lots of natural light and large enough to hold more books and resources. There are four rooms, including a meeting room. The staff have always been helpful, cheerfully doing everything possible to meet our needs.*

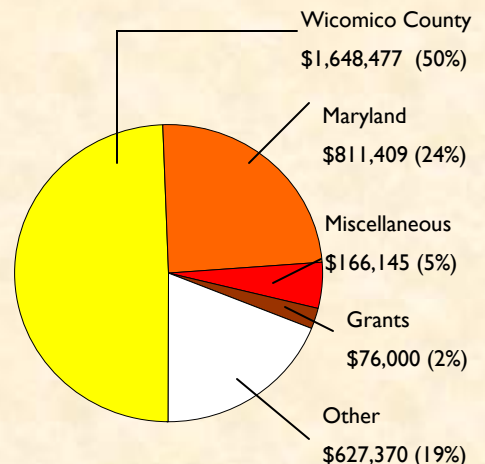
*Growing up in Carroll County on a dairy*

Suzanne Lussier-Jones

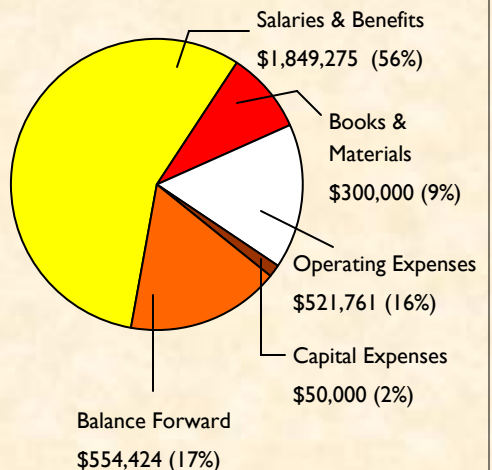
### Fiscal Year 2009

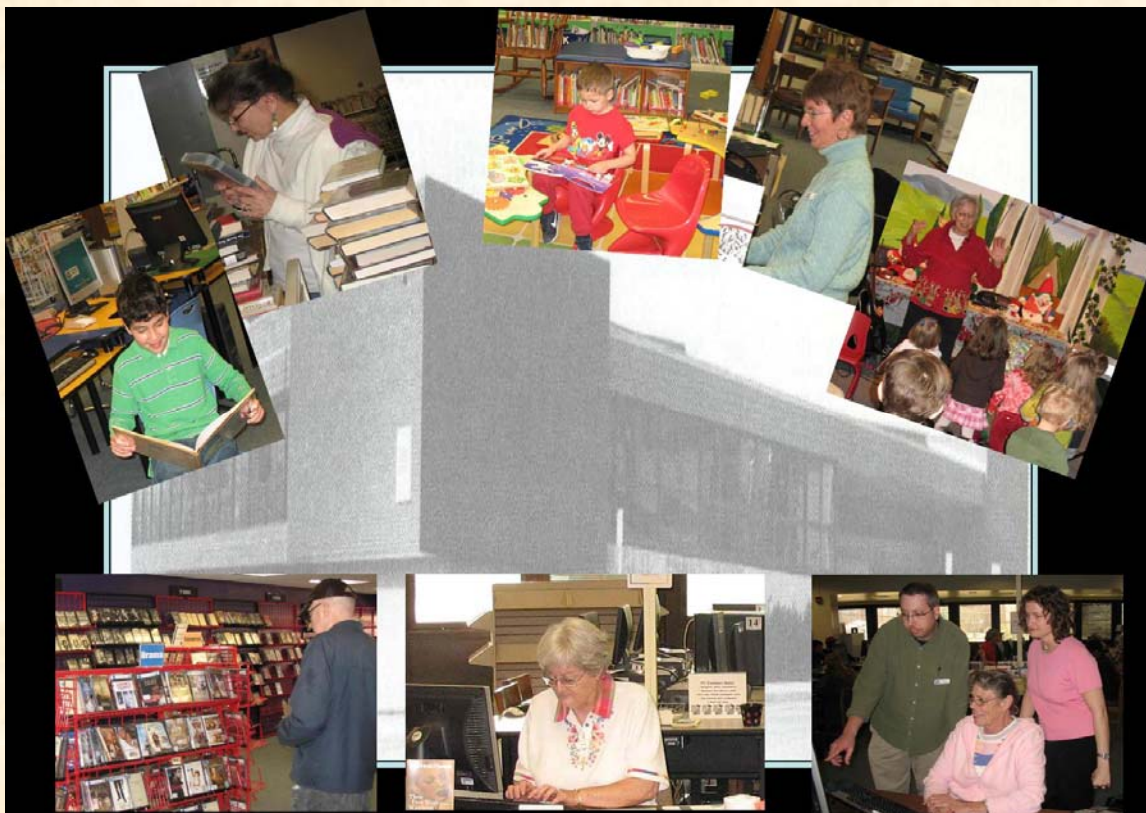
Total budget: \$3,329,401

#### Revenues



#### Expenditures





### **Your Library at a Glance**

	Total FY09	Total FY08	Year over Year
<b>Circulation</b>	815,792	743,090	72,702 9.8% Increase
<b>Items Added</b>	25,098	24,315	783 3% Increase
<b>Cards Issued (New)</b>	5,615	6,112	-497 8% Decrease
<b>Cards Renewed</b>	4,912	4,231	981 16% Increase
<b>Bookmobile Stops</b>	1,263	1,219	44 3.6% Increase
<b>Programs &amp; Events</b>	1,113	804	309 38.4% Increase
<b>Event Attendance</b>	14,402	13,506	896 6.6% Increase
<b>Classes</b>	288	236	52 22% Increase
<b>Class Attendance</b>	1039	733	306 41.7% Increase
<b>Computer Sign-ups</b>	135,892	135,653	239 0.2% Increase
<b>Information Questions Answered</b>	45,063	40,741	4,322 10.6% Increase
<b>Meeting Room Bookings</b>	1,597	1,571	26 1.7% Increase



## Donors — Thank You

Our sincere appreciation to the following individuals and organizations for their generous financial and in-kind donations.

Warren and Joyce Boyce	Norman Johnson
Lion Colleen Chamberlain & PDG Oakley Sumpter	Lower Shore Intergroup
Donald & Barbara Cummins	Salisbury Metro Lions Club
Terry S. Dix & Barbara J. Dix	Montgomery Saylor & Tami L. Saylor
Bernice M. Duker	Anna G. Seidel Memorial Book Collection
Estate of Iris Rose Duncan	John D. Solliday
Four Seasons Garden Club	Susan Lee Todd Memorial Fund
The Gentile Family	Paul and Anne Twining
Cassandra L. Horner	Wicomico Woman's Club Inc.
Peter and Judy Jackson	William K. Woods & Michelle S. Woods

Every effort has been made to ensure the accuracy of this list.

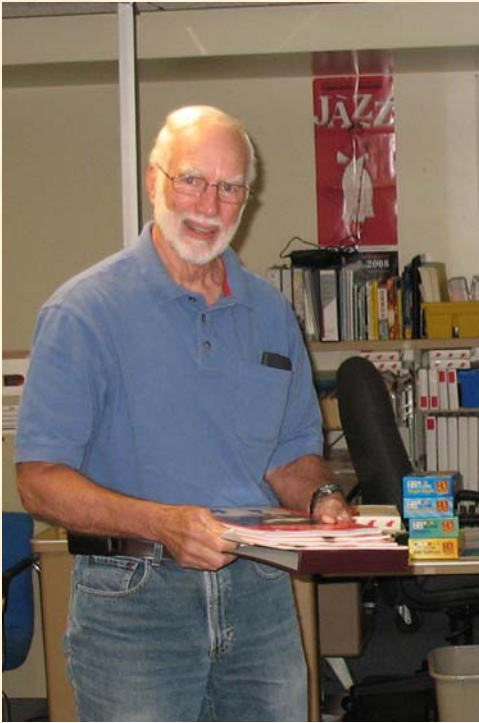
Please accept our apologies if an error was made, and notify us with corrections at 410-749-3612 ext 155.

## Volunteers — Thank You

We recognize and thank you for generously volunteering your time and energy in making our Library a better place.

Ackerson, Kenneth	Ephrem, Joseph	Noppinger, Mary
Adkins, Stan	Evans, Jonathan	Olsen, Emily
Arrington, Joe	Hands, Jenna	Paciga, Alex
Aziz, Rayyan	Hendrickson, Colleen	Paciga, Isaac
Balish, Mary Lou	Hendrickson, Leslie	Perdue, Jamie
Barry IV, James	Hobbs, Charlie	Price, Derosia
Baumann, Barbara	Hoffman, David	Rogers, Latoya
Blaher, Robert	Howard, Abigail	Salisbury Women's Auxiliary
Booth, Rosaleen "Shorty"	Hranicka, Joyce	Schall, Kevin
Brent from MAC	Imrisik, Steven	Shenk, Linda
Brooks, Holly	Jagusaik, Jake	Simpson, Chelsea
Burns, Judy	Jessa, Mudia	Smith, Keeny
Chisum, Lionel	King, Marcus	Smith, Sommer
Church, Jamal	Layfield, Brittany	Sproul, David
Connelly, Bob	Leonard, Dasia	Stratton, Matthew
Corbin, Rosalie	LesCalette, Kyle	Thrash, Sarah
Coston, Shawn	Magoon, Bhanv	Walsh, David
Daly, Tykan	McGinnis, Mr. Bill	Waters, Markeeta
Davis, Shannon	Merrill, Tommy	Webster, David
Doremus, Toby	Mesigil, Elaine	White, Ashley
Dumarsair, Warren	Michael from Wicomico HS	Wilkerson, Jeff
Duncan, H. Scott	Mitchell, Sybil	Wilkerson, Sara
Ent, Angelica	Mudoh, Joy	Willey, Carroll
Ephrem, Elshaddai	Murphy, Lisa	Wong-Williams, Kellson

## Main Library Volunteers



Scott Duncan sorts through donated books.



Joyce Hranicka prepares books for circulation.



Elshaddai Ephrem shelves books.



Warren Dumarsair shows off one of our many DVDs.

### Tom Hehman, Director

#### Main Library

122 South Division St., Salisbury

410-749-3612

#### Bivalve Station

Westside Community Center

21109 Bivalve Lodge Rd., Bivalve

410-873-2472

#### Centre Branch

Centre at Salisbury mall

North Salisbury Blvd. Salisbury

410-546-5397

#### Pittsville Branch

34372 Old Ocean City Rd., Pittsville

410-835-2353

## Library Board of Trustees FY09

Jim Biggs, Chairperson

Leslie Hayes Russo, Treasurer

Marlene Porter Rinnier

Winnie Stokes Wooley

Southey Lord

Sheree Sample-Hughes, County Council Liaison

Valerie Murphy, Vice-Chairperson

Elizabeth Bellavance, Secretary

Kathryn Wilde

Yvonne Terry

Marvin Long

Terry E. Cohen, City Council Liaison



Supporting Learning, Building Community, Enriching Lives